

cooperative housing complex wagnisART

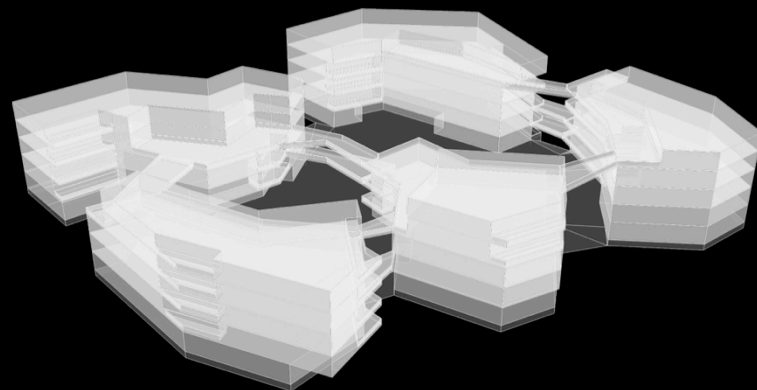
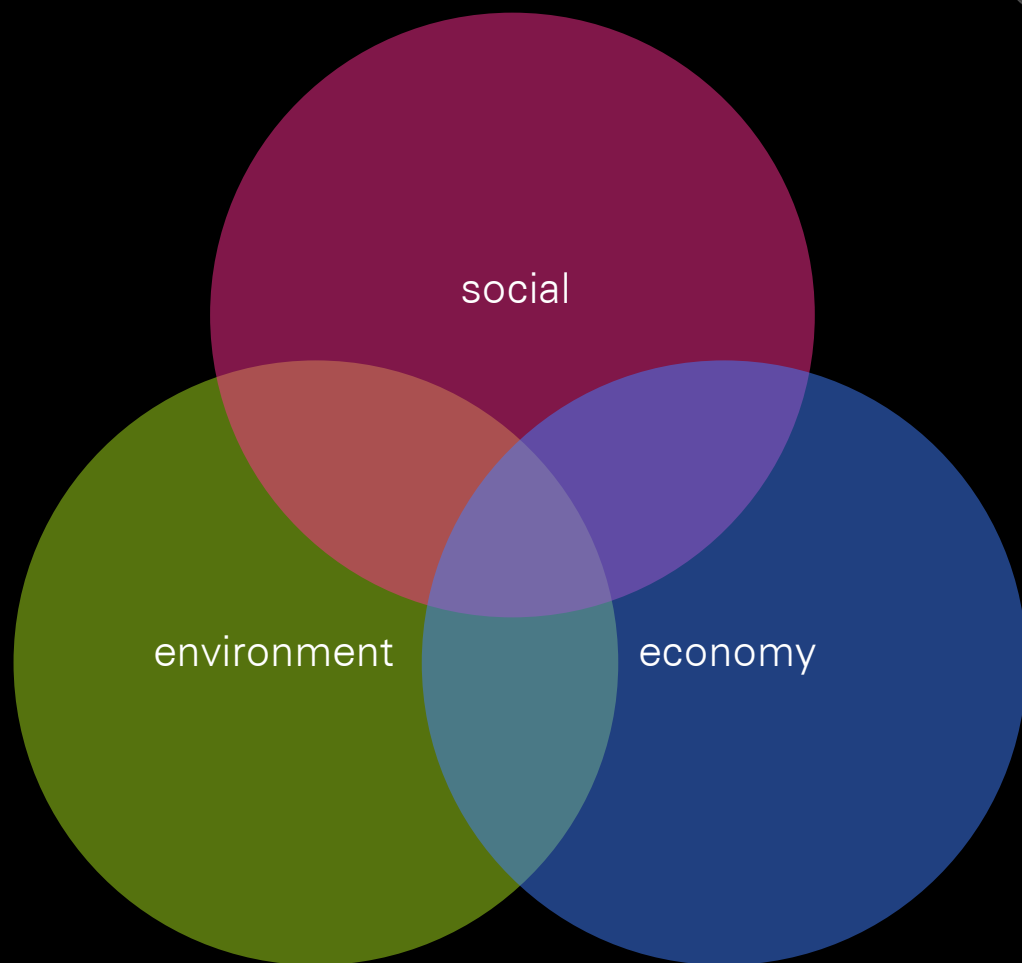
A0 – back to the city – piestany, slovakia

27.02.2020

julius klaffke - bogevischs buero



sustainability







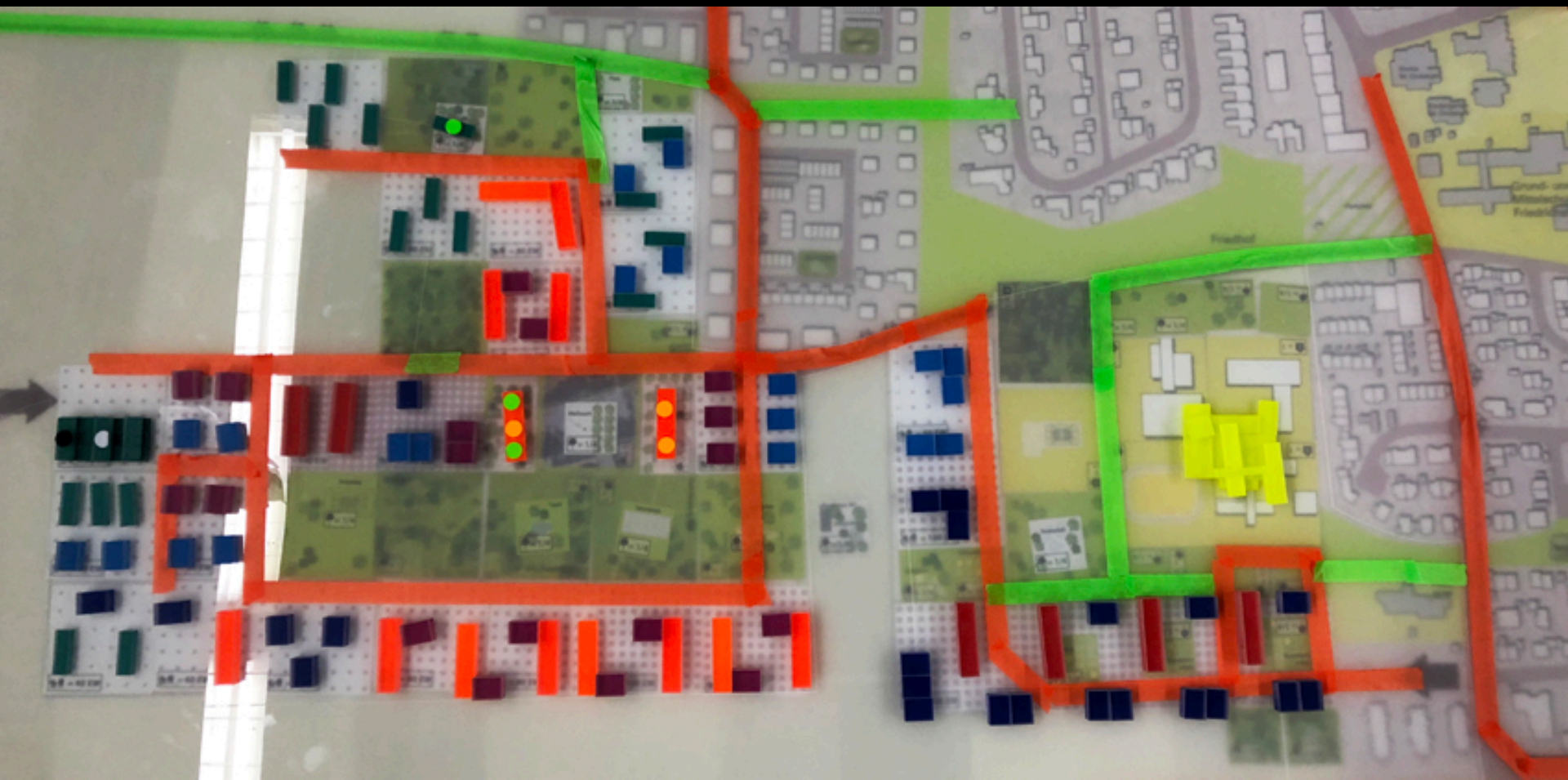








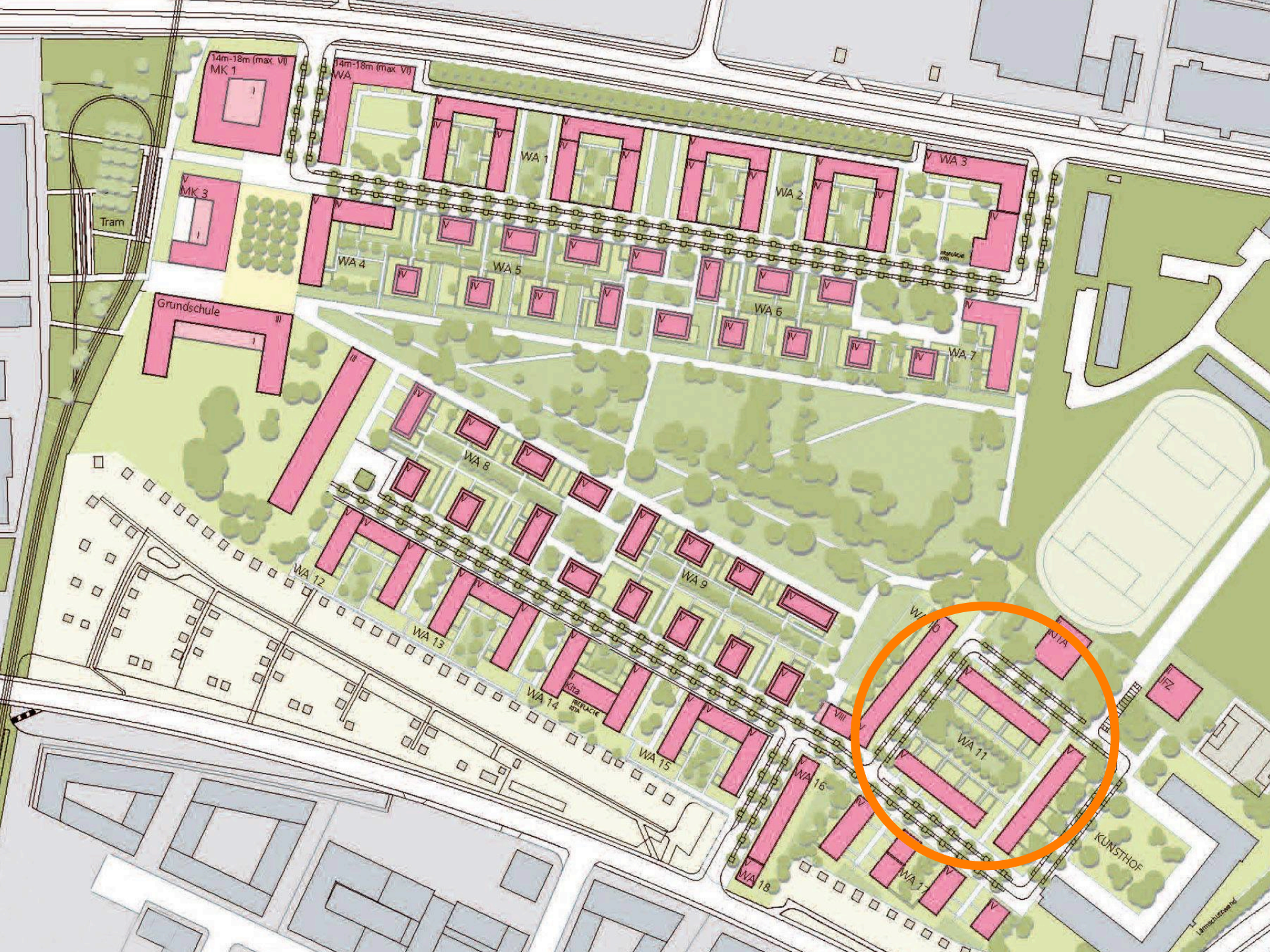


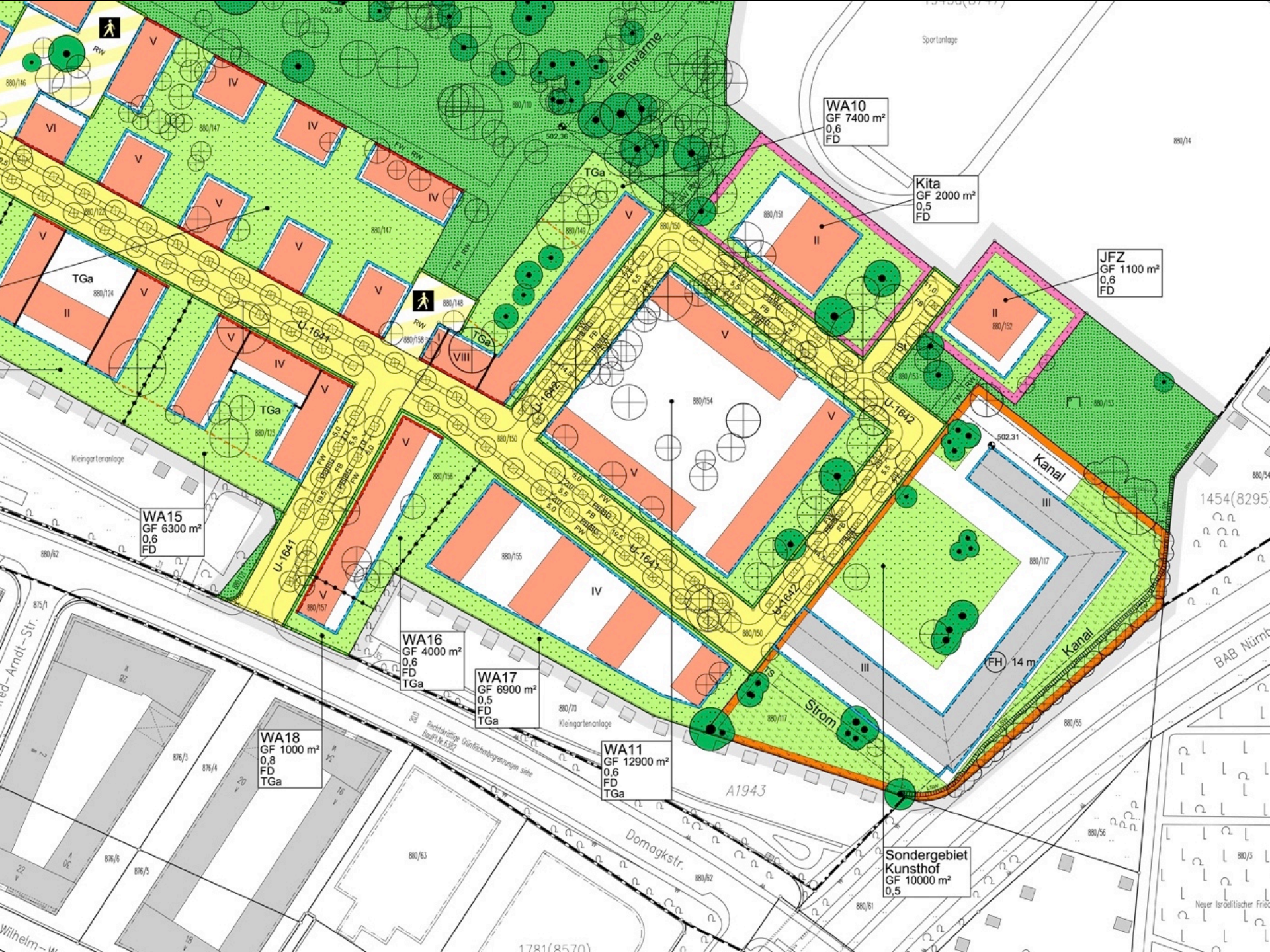












WA10
GF 7400 m²
0,6
FD

Kita
GF 2000 m²
0,5
FD

JFZ
GF 1100 m²
0,6
FD

WA15
GF 6300 m²
0,6
FD

WA16
GF 4000 m²
0,6
FD
TGa

WA17
GF 6900 m²
0,5
FD
TGa

WA18
GF 1000 m²
0,8
FD
TGa

WA11
GF 12900 m²
0,6
FD
TGa

Sondergebiet
Kunsthof
GF 10000 m²
0,5

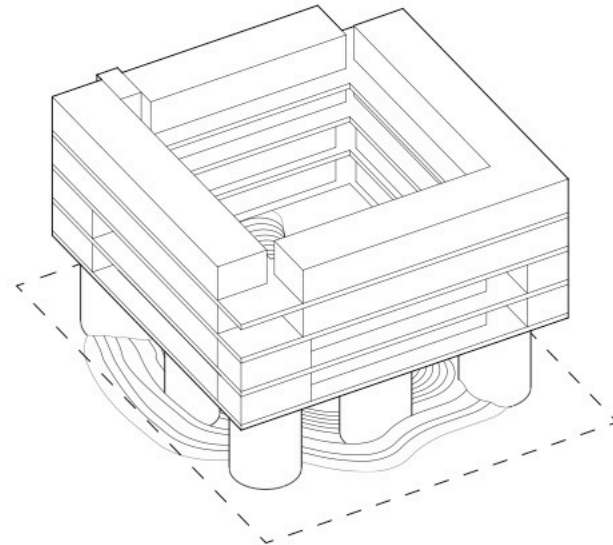
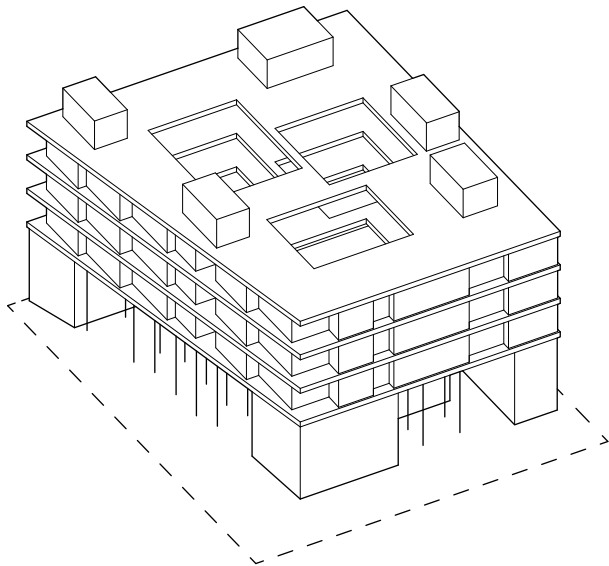
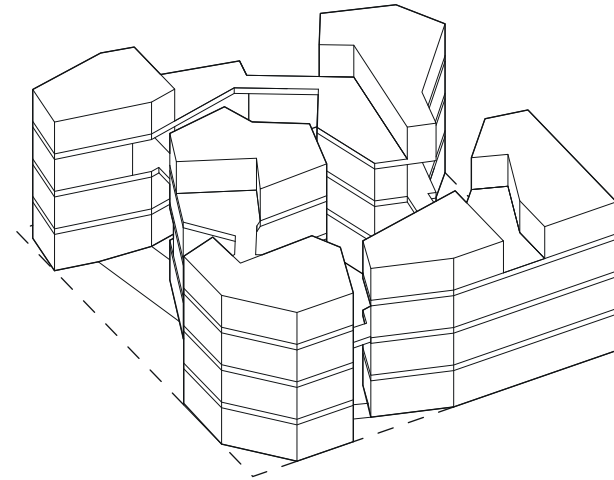








concept
votum

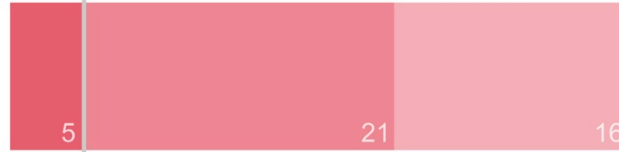




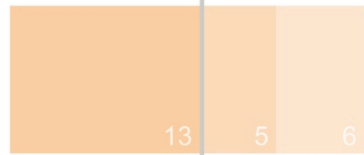
privately financed
23% of apartments
40% of living area

funded
77% of apartments
60% of living area

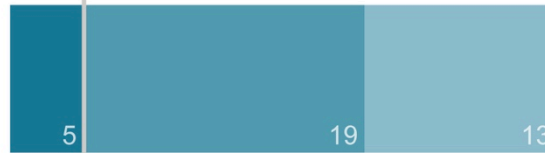
1 zimmer



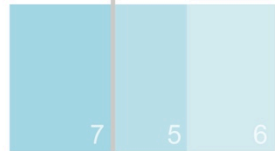
2 zimmer



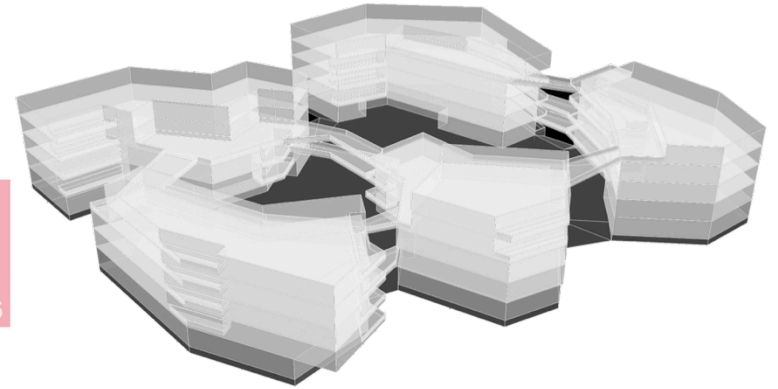
3 zimmer



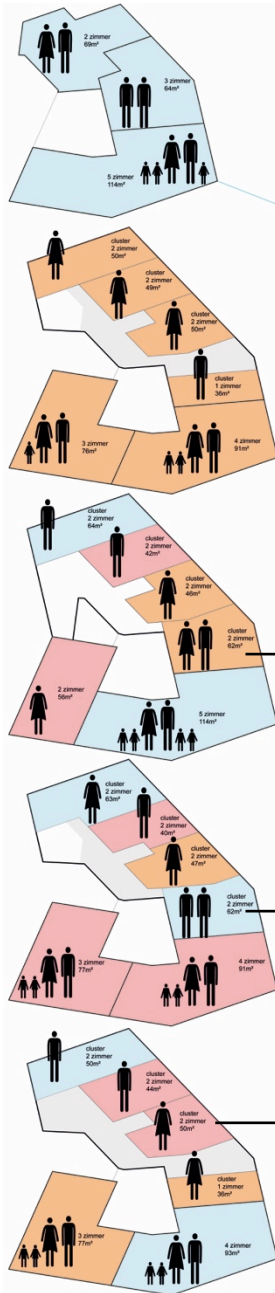
4 zimmer



5 zimmer



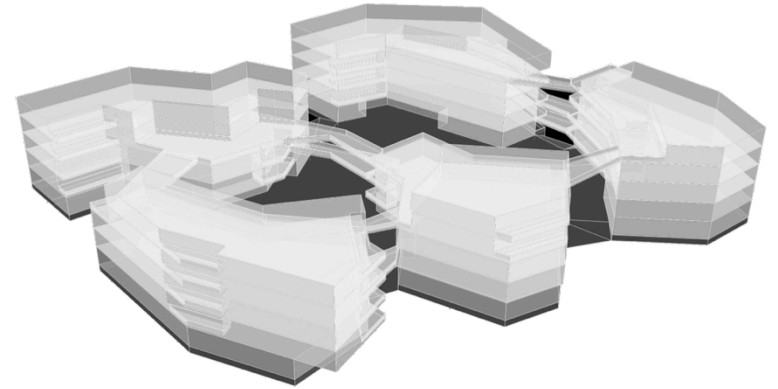
social mix



communal funding

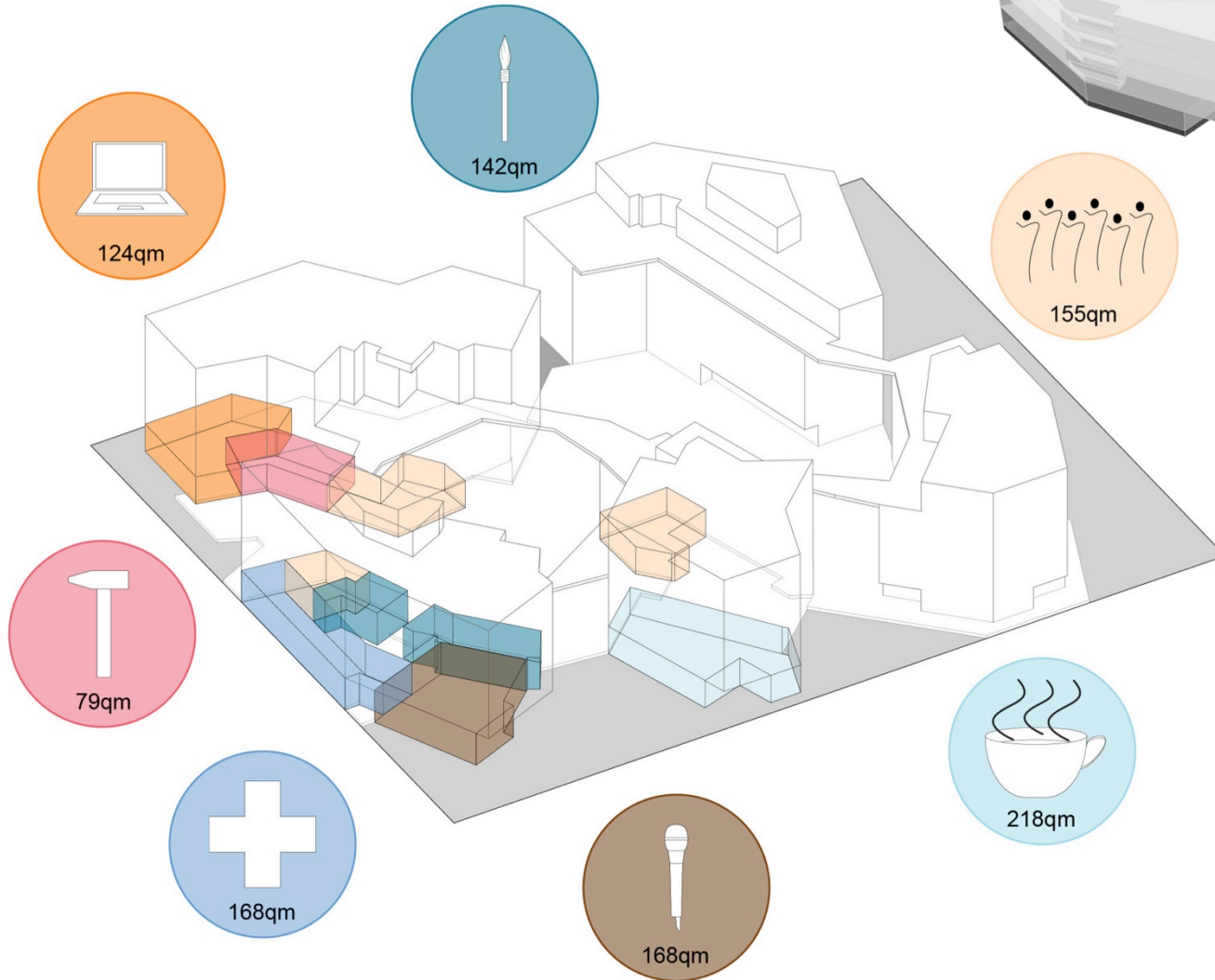
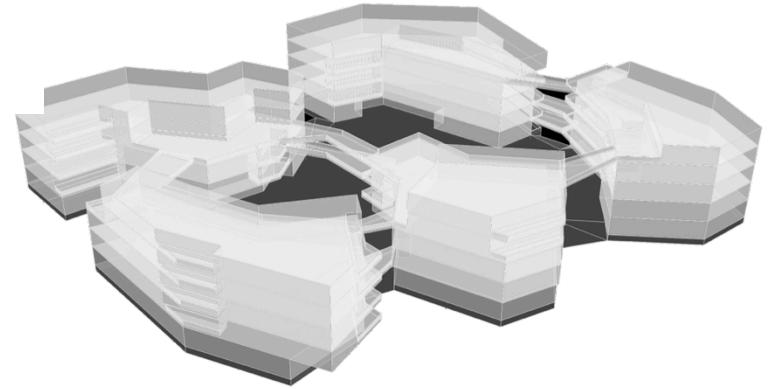
privately financed

state funding



social mix

collective and commercial
spaces
10% of net area





ground floor



2nd floor

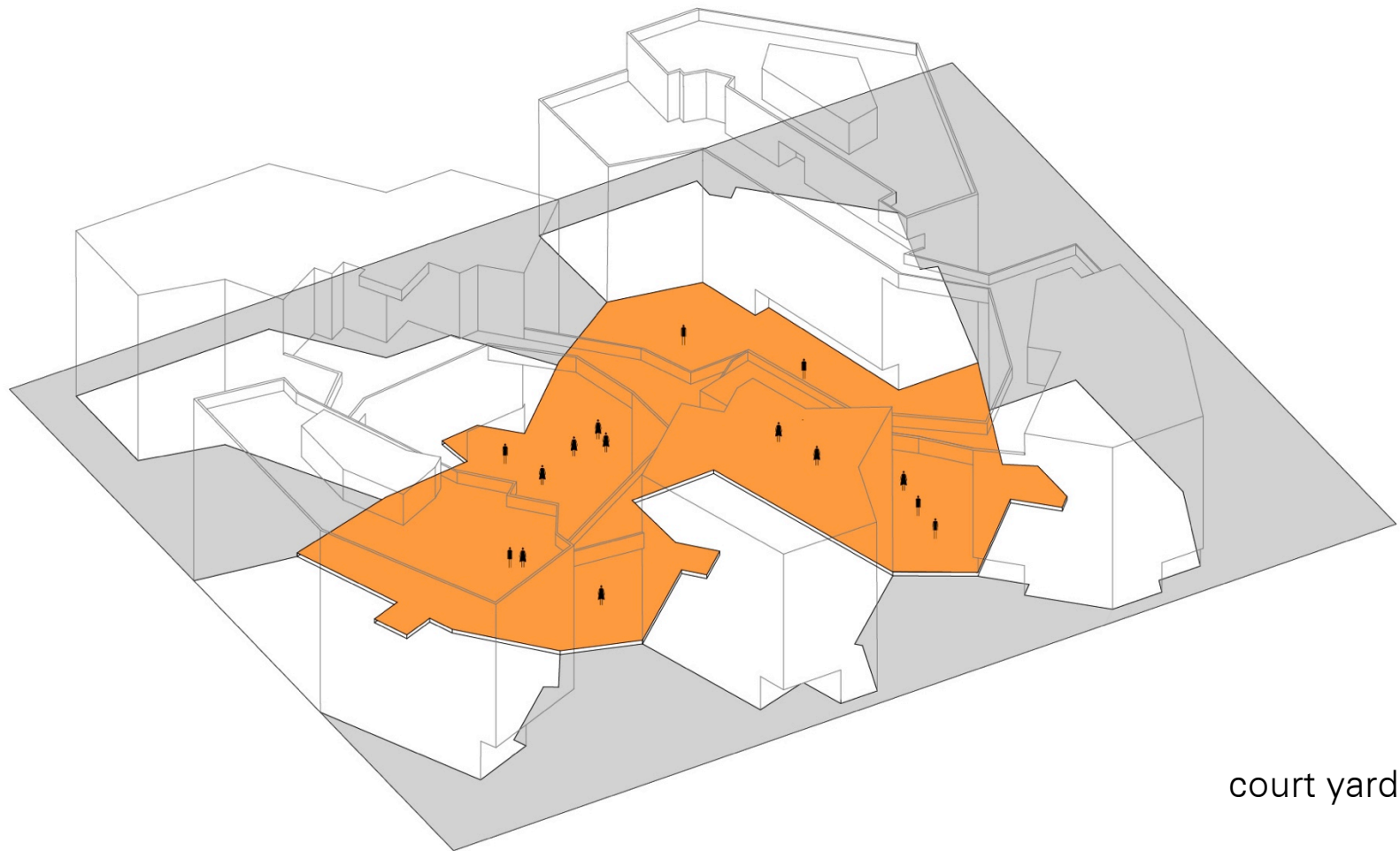


4th floor



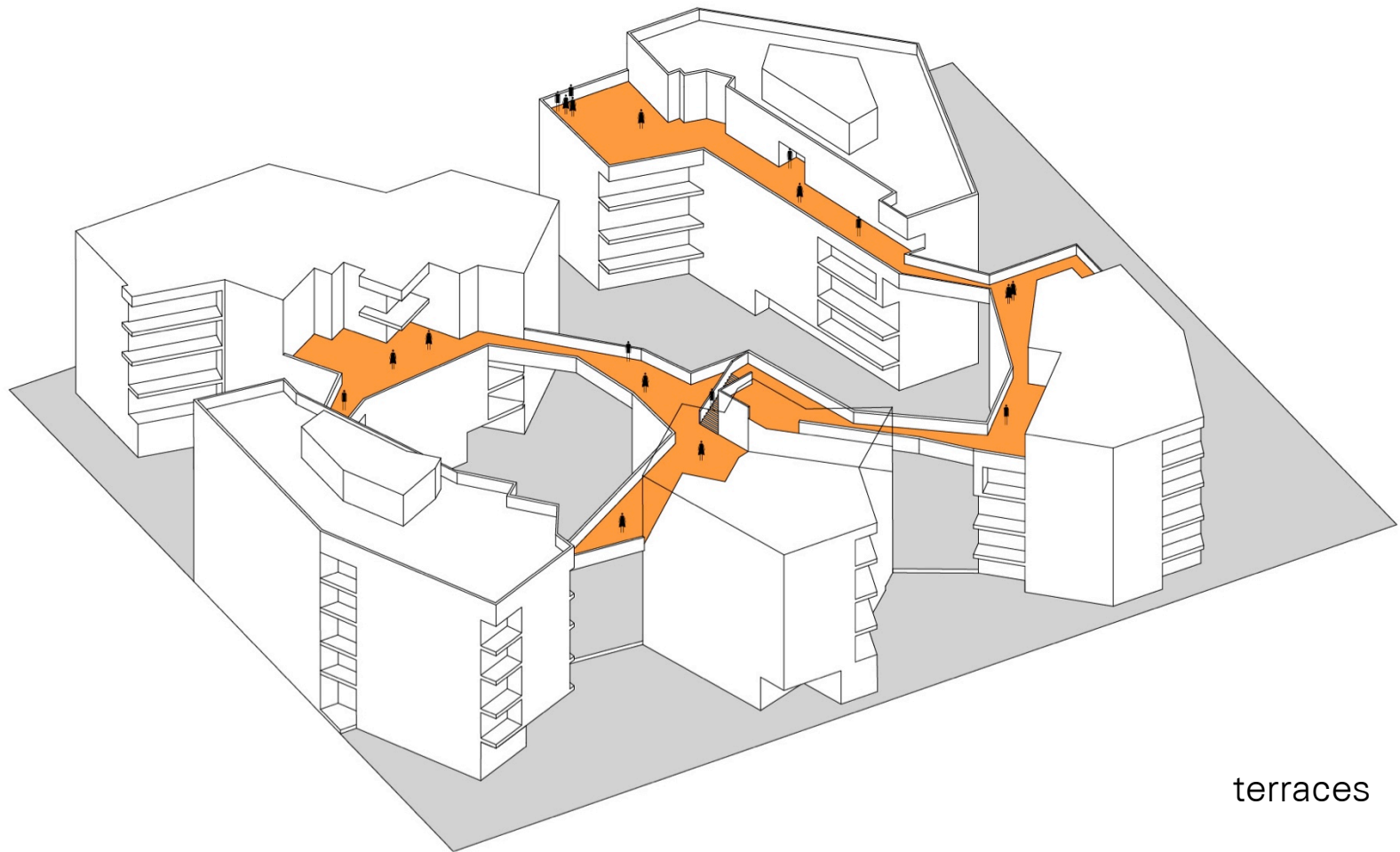
5th floor

sequence of communal open spaces



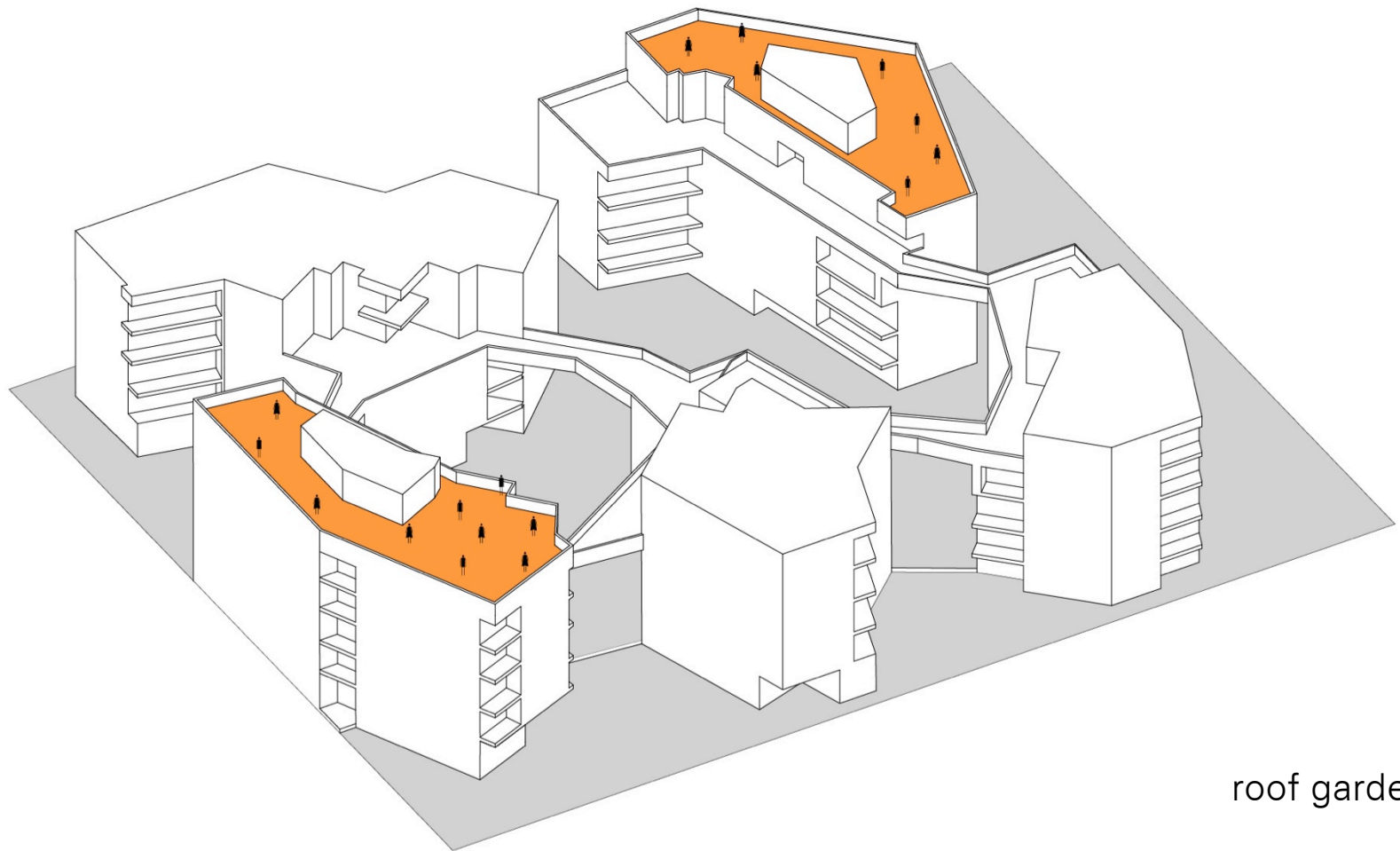
court yard

sequence of communal open spaces



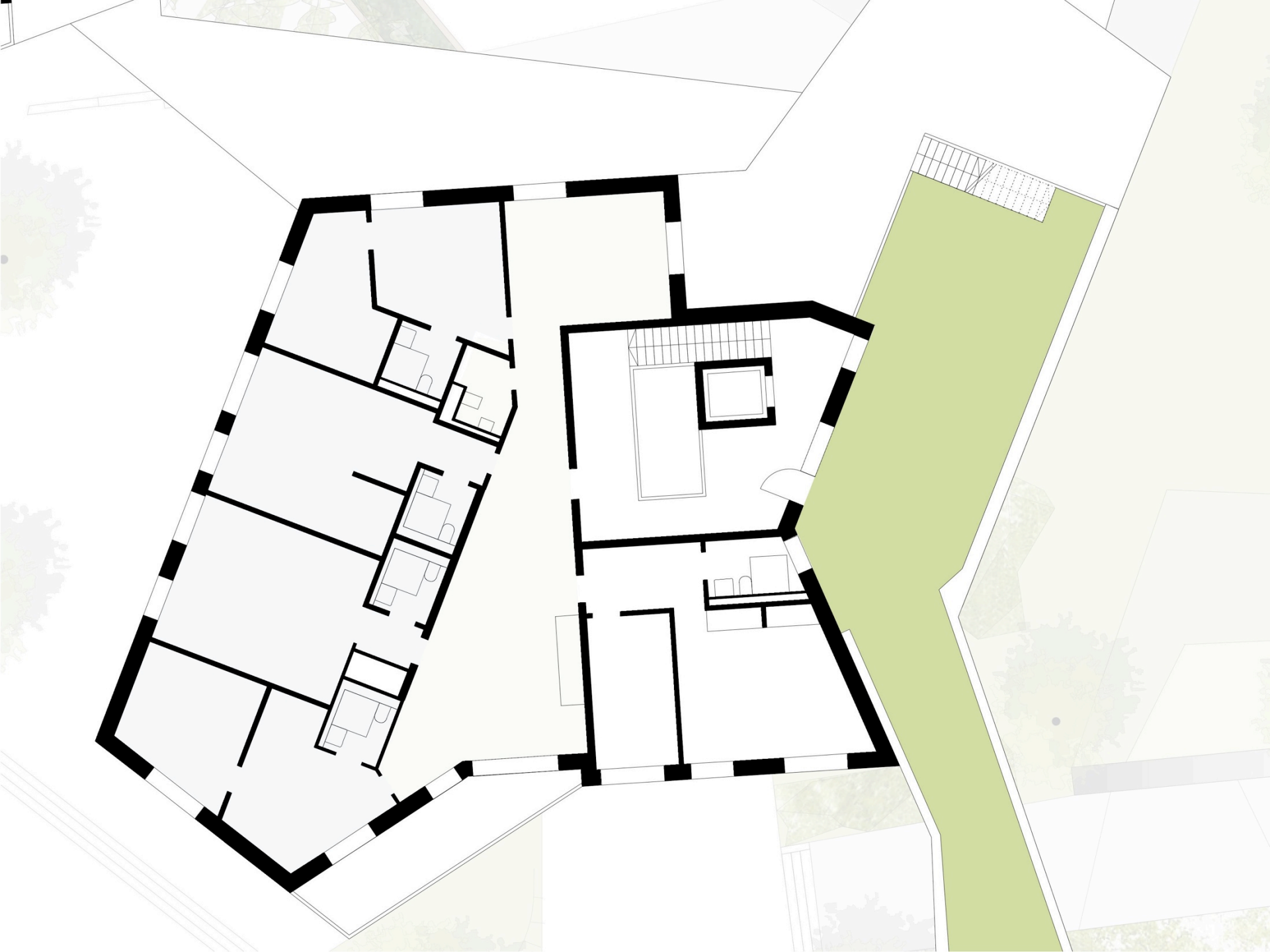
terraces

sequence of communal open spaces



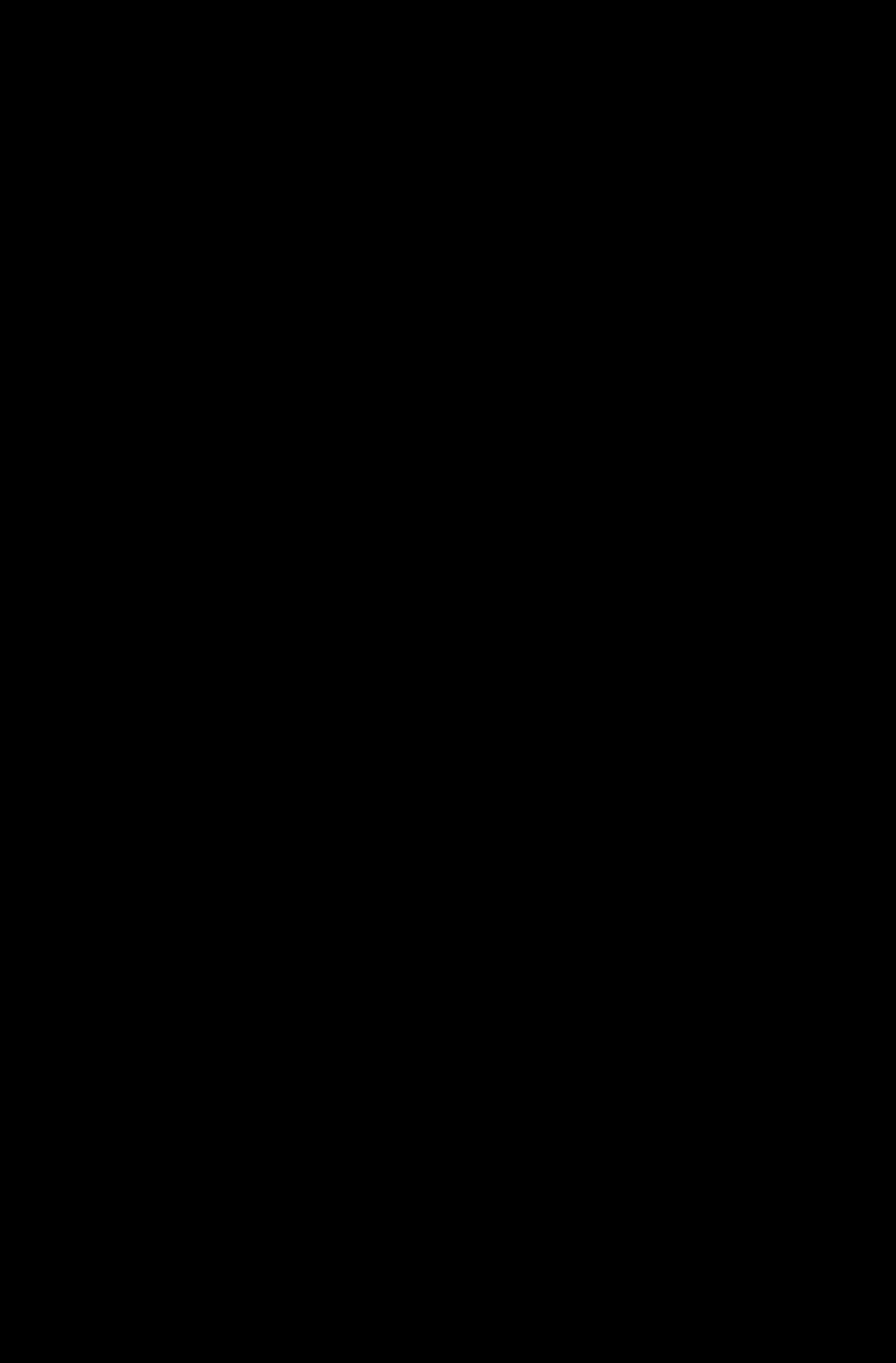
roof gardens

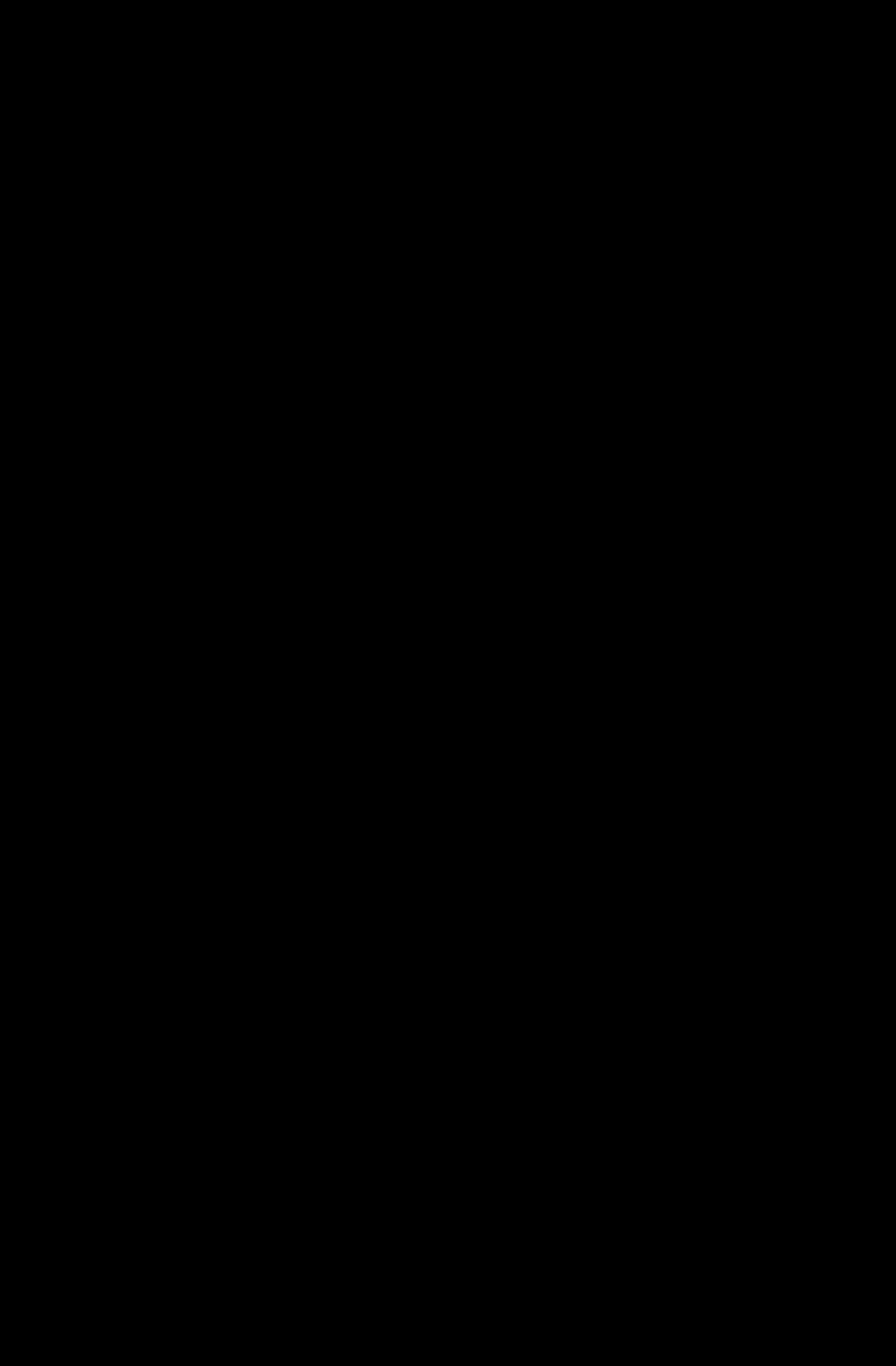






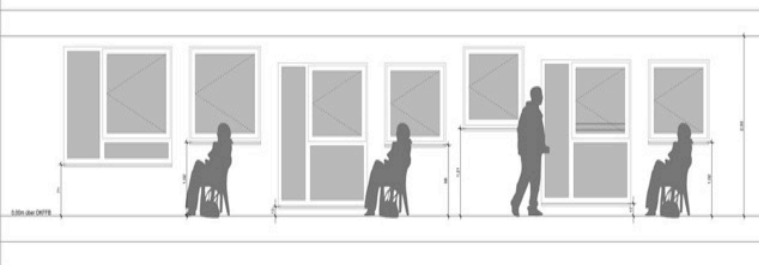








Fenster liegend Clusterfenster Fenster stehend Küchenfenster Badfenster Fenster stehend 4.OG Küchenfenster 4.OG













contruction

basement:
water impermeable reinforced concrete

skeleton:
reinforced concrete

non-load bearing exterior wall:
pre fab timber frame



investment & operational cost

standard	certified passive house
completion	2016
construction costs	2.000 €/sqm net area*
operational costs	2€/sqm net area**

*not included: parking garage

**due to high level of in-house work:
resident caretaker, resident working groups
for airfilter change, gardening, operation of
guest apartments



research report of the ecological study

Chair of Energy Efficient and Sustainable
Design and Building,

Technische Universität München
Prof. W.Lang

recommendations for action

energy- and resource consumption in the
operating phase

use of renewable raw materials

life cycle phase of disposal

grey energy: subterranean structures













